

## Hello

The Basil Sellers Exhibition Centre (the Bas) is calling for expressions of interest from artists, arts groups or curators interested in exhibiting in the annual program at the Bas in 2020.

There are three exhibition slots available in 2020, April, August and November.

EOIs can include solo exhibitions, group exhibitions and exhibitions from organisations and institutions.

The selection of exhibitions is made by Eurobodalla Shire Council's Creative Arts Services team.

Expressions of interest to be part of the exhibition program in 2020 close Friday 10 May at 4pm.

Please read the Guide for Exhibitors before submitting your EOI.

For further information about exhibiting in the Bas, please contact Indi Carmichael or Liz McCrystal at [hello@thebas.com.au](mailto:hello@thebas.com.au)

**see you  
at the  
Bas**

## **Guide for exhibitors**

*Please read the following information carefully prior to submitting your EOI and allow up to eight weeks for the review of your application.*

### **About the Bas**

The Bas is an exhibition space within the Moruya Library and arts facility that boasts 100 square metres of exhibiting space and 57 linear metres of hanging space.

The aim of the Bas is to celebrate local and national creative art and contemporary culture for the enjoyment and benefit of all who live and work in Eurobodalla or visit the areas.

### **Selection of exhibitions**

Eurobodalla Shire Council is pleased to consider all exhibition submissions to the Bas. The exhibition program is arranged by the Council's Creative Arts Services team.

Exhibition submissions are assessed through a set annual expressions of interest period.

Expressions of interest can include solo exhibitions, group exhibitions and exhibitions from organisations and institutions.

The key criteria for selection is:

- Excellence – execution, articulation of concept and innovation.
- Originality – unique ideas or a fresh approach to established themes.
- Diversity – contributes to a varied and interesting annual program.
- Appeal – respects our Shire's cultural and social sensibilities.
- Compatibility – how the exhibition fits with the overall annual program.

In addition to exhibitions generated through the expressions of interest process, the Bas actively develops exhibitions and partnership projects to present an annual program of variety and depth. This may include educational exhibitions, touring exhibitions, in-house curated exhibitions or joint projects with other cultural organisations.

**see you  
at the  
Bas**

### **Duration of exhibitions and fees**

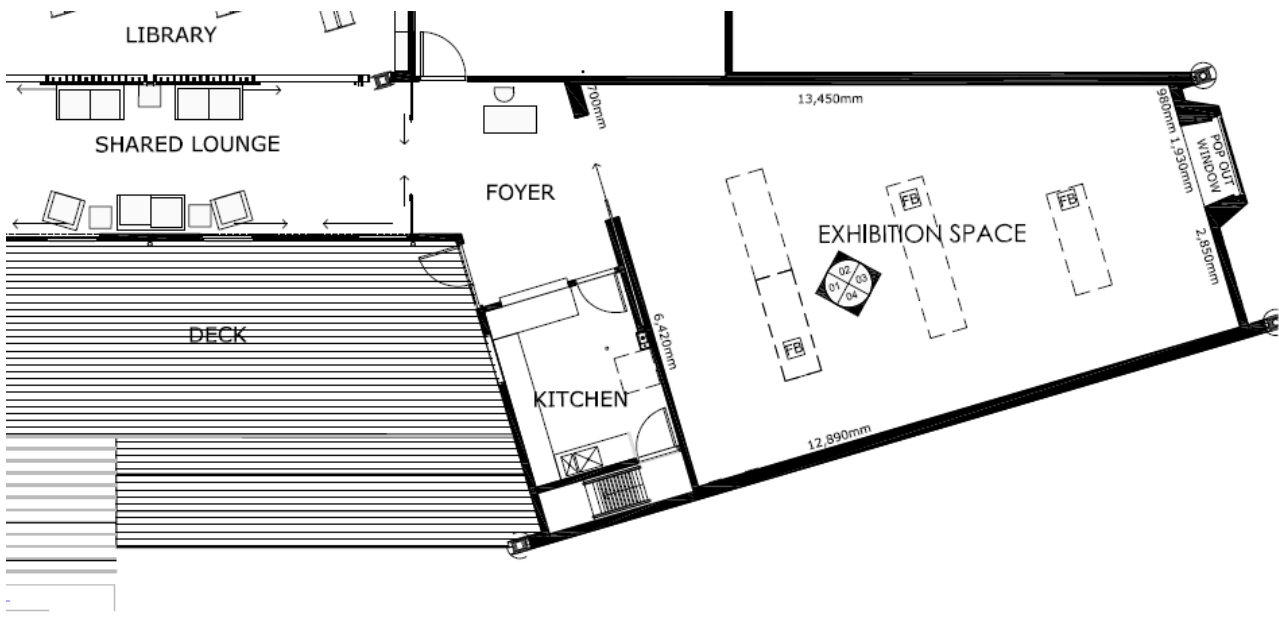
Exhibitions in the Bas are programmed in three week/ four weekend time slots.  
The fee is \$700 plus a refundable \$500 bond.  
There is a 20% commission on sold works.

### **Gallery Conditions**

The Bas utilises climate control to maintain stable temperatures within the gallery space and storage room. The Bas has windows that allows natural light into the gallery, but has capacity to block day light, but not black out the gallery space. The Bas has a gallery quality, three channel programmable lighting grid. The Bas has moveable walls that can be used to reconfigure the interior space.

### **Gallery Hours:**

The Bas operating hours:  
Tuesday – Sunday, 10am – 4pm.  
Monday and Public Holidays: Closed.



**see you  
at the  
Bas**

[www.theBas.com.au](http://www.theBas.com.au)  
[hello@theBas.com.au](mailto:hello@theBas.com.au)  
+61 2 4474 1061

Corner of Vulcan Street  
and Campbell Street  
Moruya NSW 2537

**Exhibitor Details:**

*Please print clearly*

Name \_\_\_\_\_

Address \_\_\_\_\_

Telephone \_\_\_\_\_ Mob \_\_\_\_\_

Email \_\_\_\_\_ Website \_\_\_\_\_

Brief bio \_\_\_\_\_

**Exhibition Details:**

What sort of exhibition are you proposing?      Solo                  Group

If group please list the names of participating artists \_\_\_\_\_

Title of exhibition \_\_\_\_\_

Brief description \_\_\_\_\_

Medium \_\_\_\_\_

**Preferred Timeslot:**

*Your preferred timeframe cannot be guaranteed. Final dates will be negotiated upon selection.*

April

August

November

Please attach the following support material:

- An extended rationale of the exhibition – no more than 1 x A4 page
- Artist or Group CV – no more than 1 x A4 page
- A minimum of 6 and a maximum of 10 high resolution JPEG images of proposed or recent work labelled with the artist's name, title, date, dimensions and medium. Please do not submit original artworks with this application.

Please forward this form and support material to [hello@thebas.com.au](mailto:hello@thebas.com.au)

**see you  
at the  
Bas**